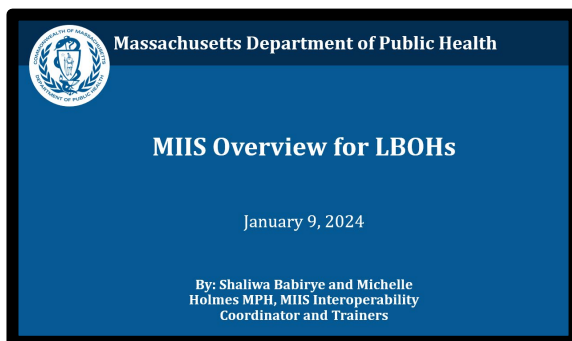




# Massachusetts Department of Public Health

## MDPH Tuesday Infectious Disease Webinar Series

### Tools for Local Boards of Health



**January 9, 2024**

**Hillary Johnson, MHS**

Senior Epidemiology Advisor to Local Health, Division of Epidemiology

**Scott Troppy, MPH, PMP, CIC**

Senior Epidemiologist – MAVEN User Management & Data Visualization Lead

**Kate Hamdan, MPH**

Surveillance Epidemiologist, MAVEN Training Team Lead

**Julie Coco, MPH**

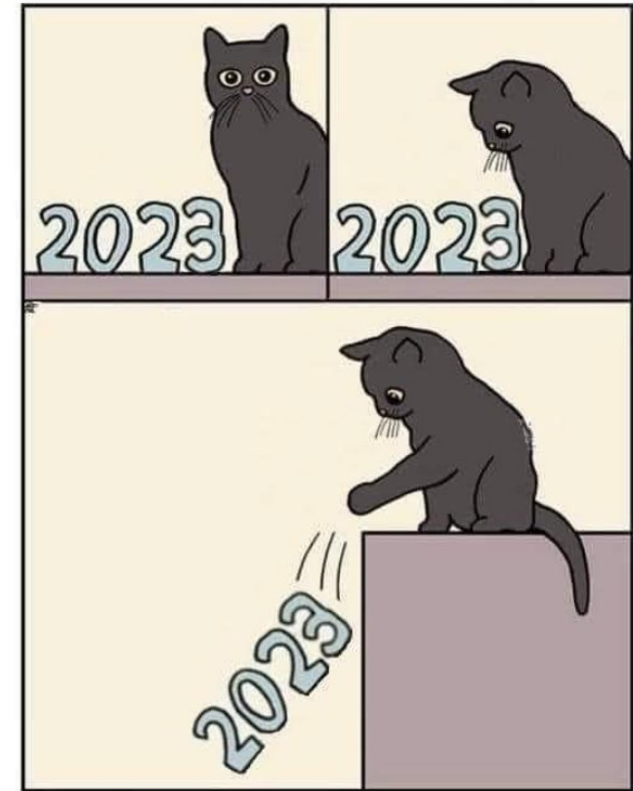
Internship Program and Training Coordinator, Division of Epidemiology

**Petra Schubert, MPH**

Emerging Infections Coordinator, Division of Epidemiology

# Agenda January 9, 2024

- **MDPH Updates Today**
  - **Tools for Local Health Webinar Registration Page Update:**
    - <http://tinyurl.com/MAVEN-Webinars>
  - **2024 Local Health Internship Program**
    - Julie Coco, MPH, Internship Program and Training Coordinator, Division of Epidemiology
  - **MDPH Tuberculosis Program:** Contacts for Your Questions
  - **MAVEN Lab Tab Clarification:** Identifying the Correct Ordering Provider
  - **Updated! [Immunizations for Respiratory Diseases Data Dashboard](#)**
    - Josh Norville, MPH, Epidemiologist, Data Assessment Unit
- **Featured Presentation: Massachusetts Immunization Information System (MIIS) for LBOH**
  - Shaliwa Babirye and Michelle Holmes MPH, MIIS Interoperability Coordinator and Trainers



# Infectious Disease Tools for LBOH Webinar Schedule!

## 2024 Upcoming Schedule!

All Registrations:	<a href="http://tinyurl.com/MAVEN-Webinars">http://tinyurl.com/MAVEN-Webinars</a>
2 <sup>nd</sup> Tues 1/09/24	MIIS Tips and Tricks for LBOH
4 <sup>th</sup> Tues 1/23/24	4 <sup>th</sup> Tuesday Office Hours
2 <sup>nd</sup> Tues 2/13/24	Pivot Tables & Looking at Your Data
4 <sup>th</sup> Tues 2/27/24	4 <sup>th</sup> Tuesday Office Hours
2 <sup>nd</sup> Tues 3/12/24	2024 Infectious Disease Case Investigation
4 <sup>th</sup> Tues 3/26/24	4 <sup>th</sup> Tuesday Office Hours

**Next Office Hours: January 23, 2024 @ 11:00am.**

MAVEN Help has Guidance Documents and  
Previous Webinars:

<http://www.maven-help.maventrainingsite.com/toc.html>

Please Update To  
**2024 NEW REGISTRATION PAGE:**  
<http://tinyurl.com/MAVEN-Webinars>

- You help us identify topics, needs, & content!
- Be sure to send ideas, requests, and questions to Hillary and Scott!

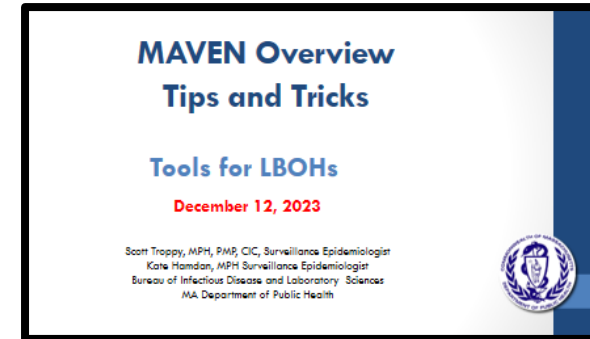


**You can always contact**  
**[mavenhelp@mass.gov](mailto:mavenhelp@mass.gov) or**  
**The MDPH Epi Program**  
**at 617-983-6800 with**  
**specific questions.**

# Updates – A quick recap for January 9, 2024

## We Last Met December 12, 2023:

- End of Year Disease Updates/Reminders
  - Respiratory Test Kit Distribution Program for LBOHs
  - Hepatitis A December 2023 Update
  - Enteric & Waterborne Illness End-of-Season Summary
    - Carley Perez Kauffman, MPH, Epidemiologist
- **Featured Presentation: MAVEN Overview, Tips and Tricks.**
  - Scott Troppy, MPH, PMP, CIC, Surveillance Epidemiologist
  - Kate Hamdan, MPH, Surveillance Epidemiologist
  - Lionel White, Senior Surveillance Research Analyst



[PDF SLIDES: MAVEN Overview  
Tips and Tricks for LBOH](#)

[WEBINAR: Presentation  
Recording](#)

Always Remember you can  
see recent webinar  
recordings and slides in  
MAVEN Help.

Bookmark the URL!

MAVEN Help: <http://www.maven-help.maventrainingsite.com/toc.html>





# MDPH Local Health Internship Program 20<sup>th</sup> Anniversary!

- **Host Application Open (Until February 4<sup>th</sup>)**
  - ✓ BOH will be notified by February 9<sup>th</sup> of status
- **Matches graduate students in public health, environmental health, nursing, and veterinarian programs**
  - Students gain hand-on experience
  - LBOH obtain assistance with pressing projects
- **Sample Projects Include:**
  - *Investigating Food Insecurity and Community Support for the Greater Boroughs Partnership for Health*
  - *Mansfield 2022 CHA Follow-Up: Community Experience and Priorities*
  - *Voices for a NICOTINE-Free Generation: Parent Perspectives and Youth Health*
  - *Data Visualization, Pre-Hospital Cardiac Arrest*
  - *Social Norms and Influence of Substance Use Among Youth*
  - *Including Pets in Emergency Shelter Plans- West Springfield, MA*
  - *Harmful Algae Blooms*
  - *Pediatric Vaccine Uptake in MA: Insights from Flu and COVID-19 Vaccination Data from July 2021-June 2023*

**CONTACT: Julie Coco, Internship Coordinator at [Julie.Coco@Mass.Gov](mailto:Julie.Coco@Mass.Gov)**

# MDPH Division of Global Populations: Tuberculosis

- Questions related to **Tuberculosis** casework can go directly to the TB Program:
  - TB Email: [BIDLS-TBGeneral@mass.gov](mailto:BIDLS-TBGeneral@mass.gov)
  - TB Program Phone: **(617) 983-6970**
  - Every town has an MDPH TB Epi assigned
    - **Check Your Town's Communication Event in MAVEN.** Listed under **DGP Contacts** (Division of Global Populations) in MAVEN.

**COMING  
SOON!**

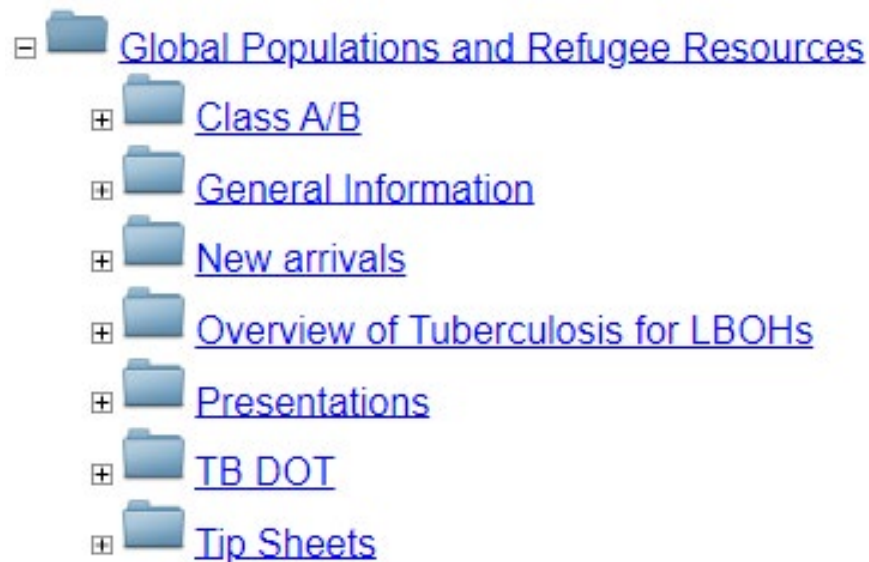
DGP Contacts					
First Name	Last Name	Title	Email	Phone	Mobile Phone
Jane	Doe	MDPH TB Epi	MDPHEmail	(123) 123-1234	(123) 123-1234

# MDPH Division of Global Populations: Tuberculosis

- Tuberculosis Materials in MAVEN Help are located under Global Populations and Refugee Resources

## MAVEN Online Help

<https://www.maven-help.maventrainingsite.com/toc.html>



If what you need is  
not here, let the TB  
program know!

TB Email: [BIDLS-TBGeneral@mass.gov](mailto:BIDLS-TBGeneral@mass.gov)

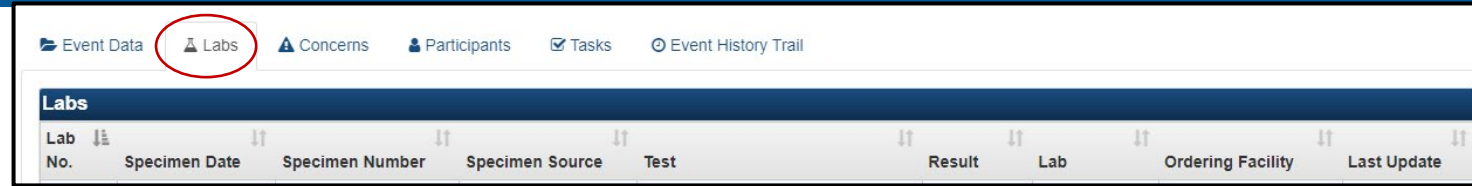
# MAVEN: Identifying the Correct Ordering Provider

- Many provider offices and smaller clinics, and even some hospitals, are part of consolidated lab testing programs and send out their specimens to a different hospital laboratory or location to PERFORM the test.
  - **A Current Example:** Beth Israel Lahey Health network providers (*include several Eastern MA hospitals like Addison Gilbert, Ana Jaques, Beverly Hospital, Mount Auburn, Lahey Burlington, Lahey Peabody, BID Milton, BID Plymouth, BIDMC, New England Baptist, etc.*) have consolidated clinical micro lab services in their network.
    - Thus, **Winchester Hospital** now performs these services for about a dozen acute care hospitals and several dozen outpatient facilities.

**Key Takeaway:** The Ordering Provider/Facility is the correct place to call for more information on a case, not the Infection Preventionist (IP) at the hospital with the lab services. They will not be able to help.

# MAVEN: Identifying the Correct Ordering Provider

- When investigating an event (particularly if lab was performed at Winchester Hospital):



1. Please carefully review the information contained in the Lab Tab and pay close attention to the ordering provider and submitting facility information.
2. If the ordering provider and/or submitting facility is NOT Winchester Hospital, please DO NOT reach out to the Winchester IP team for assistance in obtaining case information, as they will be unable to help you.
3. Contact the ordering provider or submitting facility (which may very well be a different BILH hospital) to obtain case information.
4. If there is not sufficient contact information (i.e., no phone number) for either the ordering provider or submitting facility in the Lab Tab, then please call the Winchester Microbiology Laboratory number contained in the Lab Tab, in order to obtain contact information for the ordering provider or submitting facility.

# MAVEN: Identifying the Correct Ordering Provider

- To start – when you view these labs from the lab tab without scrolling down or clicking into the lab, they look like they are missing an ordering facility.

Let's take a look at an example.

Labs									
Lab No.	Specimen Date	Specimen Number	Specimen Source	Test	Result	Lab	Ordering Facility	Last Update	
1			Stool	Ciprofloxacin [Mic]	Susceptible	Winchester Hospital - 262/2...			
1			Stool	Ampicillin [Not Specified]	Susceptible	Winchester Hospital - 262/2...			
1			Stool	Trimethoprim+Sulfamethoxazole [Mic]	Susceptible	Winchester Hospital - 262/2...			
1			Stool	Ampicillin [Not Specified]	Susceptible	Winchester Hospital - 262/2...			
1			Stool	Trimethoprim+Sulfamethoxazole [Mic]	Susceptible	Winchester Hospital - 262/2...			
1			Stool	Ciprofloxacin [Mic]	Susceptible	Winchester Hospital - 262/2...			
1			Stool	Microorganism: PrId: Pt: xxx: Nom: Culture	Salmonella species	Winchester Hospital - 262/2...			
1			Stool	Microorganism: PrId: Pt: xxx: Nom: Culture	Salmonella species	Winchester Hospital - 262/2...			
1			Stool	Microorganism: PrId: Pt: xxx: Nom: Culture	Salmonella species	Winchester Hospital - 262/2...			
2			Stool	Microorganism: PrId: Pt: IsIt: Nom: Bacterial subtyping	Salmonella species	William A Hinton State Labo...	Winchester Hospital - 41 Hi...		

# MAVEN: Identifying the Correct Ordering Provider

- If you scroll down though, you can see in the “Details” section that there is often a “Lab Facility (Other)” that corresponds to the Ordering facility (the front end label of this variable is, admittedly, confusing!). Beneath that is the ordering provider.

Lab Facility:	Winchester Hospital - 262/264 West Cummings Park, Woburn, MA 01801, (781) 756-2321
CLIA:	22D1057427
Lab Facility (Other):	Anna Jaques Hospital Lab For Interface
Name:	[REDACTED]
Address:	[REDACTED]
City:	[REDACTED]
State:	[REDACTED]
Zip:	[REDACTED]
Notes:	Rare Salmonella species Susceptibility testing of non-typhoidal Salmonella from stool is NOT routinely performed which is consistent with current recommended guidelines. Please call the lab to request [REDACTED]

# MAVEN: Identifying the Correct Ordering Provider

- And finally, you can see all this a little neater if you actually click into the lab.

**Lab Facility**

Lab Facility  
Winchester Hospital - 252/254 West Cummings Park, Woburn, MA 01801, (781) 756-2321

Lab Facility (Other)

CLIA  
22D1057427

**Ordering Facility**

Lab Facility

Ordering Facility Phone

Lab Facility (Other)  
Anna Jaques Hospital Lab For Interface

CLIA

**Ordering Provider**

Name

Facility

Address

City

State

Zip

Phone

Email

Clinician Lookup

Nurse Practitioner Lookup

**Ordering Provider**

Name

Facility

Address

City

State

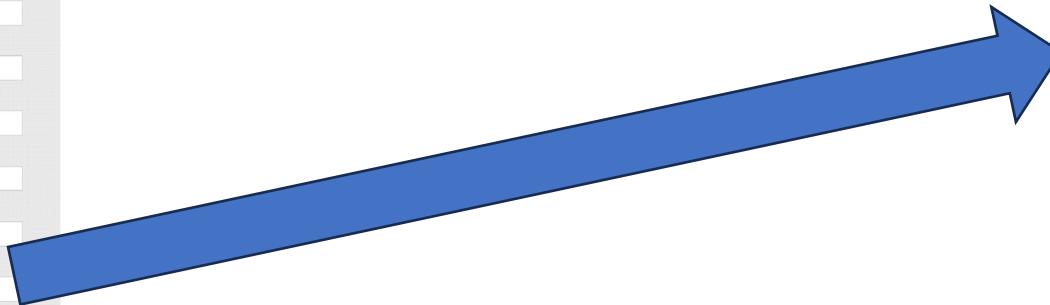
Zip

Phone

Email

Clinician Lookup

Nurse Practitioner Lookup



# MAVEN: Identifying the Correct Ordering Provider

- **Final Note:** Many positive specimens will be sent to the State Public Health Lab (SPHL or William A Hinton State Laboratory) for ‘subtyping.’ The processing lab will send those to SPHL (and would look like the ordering provider for that line). It is best to select a different line to see who original ordering provider is.

Check one of these to obtain original ordering provider.

Labs								
Lab No.	Specimen Date	Specimen Number	Specimen Source	Test	Result	Lab	Ordering Facility	Last
1			Stool	Ciprofloxacin [Mic]	Susceptible	Winchester Hospital - 262/2...		
1			Stool	Ampicillin [Not Specified]	Susceptible	Winchester Hospital - 262/2...		
1			Stool	Trimethoprim+Sulfamethoxazole [Mic]	Susceptible	Winchester Hospital - 262/2...		
1			Stool	Ampicillin [Not Specified]	Susceptible	Winchester Hospital - 262/2...		
			Stool	Trimethoprim+Sulfamethoxazole [Mic]	Susceptible	Winchester Hospital - 262/2...		
1			Stool	Ciprofloxacin [Mic]	Susceptible	Winchester Hospital - 262/2...		
1			Stool	Microorganism: PrId: Pt: xxx: Nom: Culture	Salmonella species	Winchester Hospital - 262/2...		
1			Stool	Microorganism: PrId: Pt: xxx: Nom: Culture	Salmonella species	Winchester Hospital - 262/2...		
1			Stool	Microorganism: PrId: Pt: xxx: Nom: Culture	Salmonella species	Winchester Hospital - 262/2...		
2			Stool	Microorganism: PrId: Pt: IsIt: Nom: Bacterial subtyping	Salmonella species	William A Hinton State Labo...	Winchester Hospital - 41 Hi...	

# Respiratory Disease Immunization Dashboard

## Full Respiratory Disease Dashboard:

<https://www.mass.gov/info-details/viral-respiratory-illness-reporting>

## Features:

- Immunization rates for flu, COVID-19, and RSV
- Statewide and municipality level data
- Demographic characteristics
- Seasonal influenza trends
- Downloadable data tables
- Additional immunization related resources

## Immunization Dashboard:

<https://www.mass.gov/info-details/immunizations-for-respiratory-diseases>

